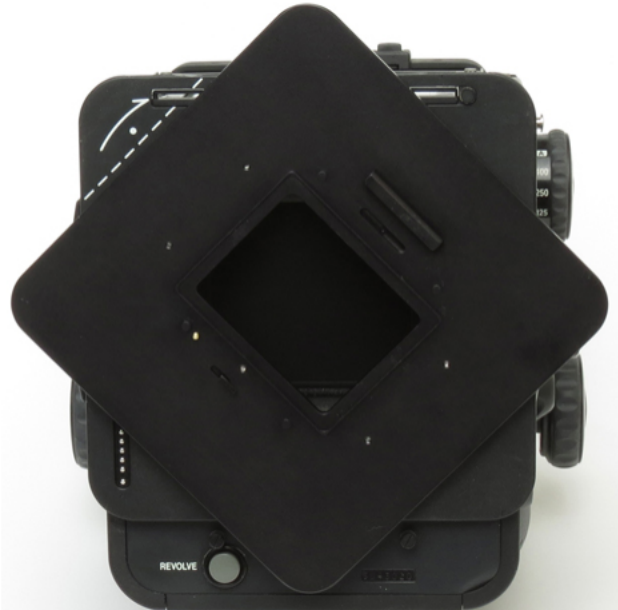




Installation instructions for the Kapture Group Inc. Hasselblad H rotating adapter



CORRECT STARTING POSITION

VERY IMPORTANT

To attach the Fuji GX680 standard adapter refer to the photo on the left. The upper clip must be in the lower left corner as shown.

The Fuji 680 body must use the MULTI-MODE when operating your digital back.

DO NOT use the digital back as a handle to rotate the plate. Always grasp the adapter plate to rotate.

ATTACHING H MOUNT DIGITAL BACK



Pre-release this latch before attaching the digital back. Once the back is seated release the latch. Always confirm the digital back is properly seated.